



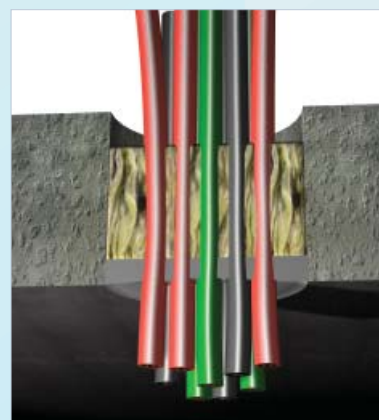
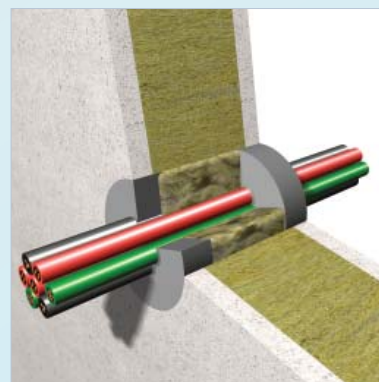
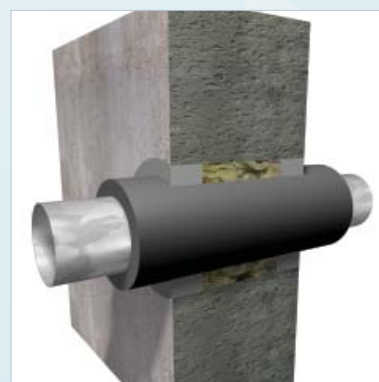
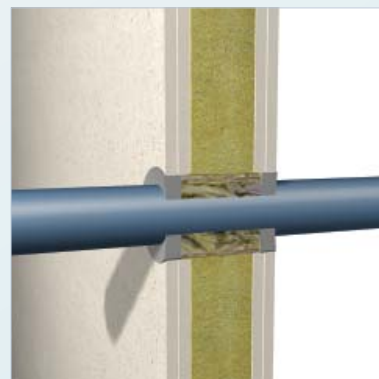
Basic Requirements for Creating a Penetration

Determine the required period of fire resistance of the element, and for loadbearing structures, ascertain the required load. The area to be sealed requires the same fire resistance as the complete floor or wall construction. In order to ensure the stability of the services is maintained under fire conditions, we recommend that all services must be adequately supported at maximum 250mm away from the wall or floor on both sides of the penetration. System fixings, impact protection and suspension elements must be steel. Monal alloys, aluminium etc are not permitted. Accessories such as guard-rails, steel angles, threaded rods. Suspension elements etc. must only be fixed to adjacent solid substrates such as concrete or masonry.

Intumex® products must be applied in accordance with EU directives and national regulations for construction material in general, and fire stopping in particular, with the applicable national test certificates and approvals, and in accordance with applicable national building regulations. Products may only be applied by trained professionals with adequate knowledge of and experience in the use of fire stopping products, and only after a thorough review of the installation guidelines, the safety data sheets, and the national test certificates and approvals. All the relevant documents can be obtained free-of-charge by contacting Intumex® or from your local dealer via telephone or in writing; in addition all installation guidelines and the safety data sheets can be downloaded free-of-charge from the Intumex® website (see www.intumex.at).

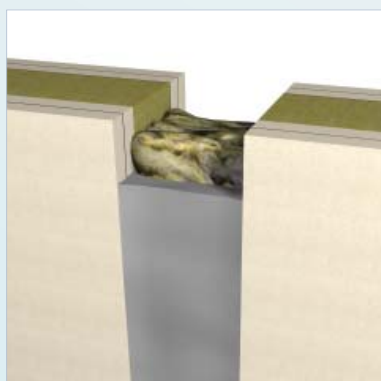
General Information

- ⇒ Fire stopping sealant expands under pressure;
- ⇒ Minimum width of joints 5mm;
- ⇒ Skin formation after approx. 15 minutes (20°C and a relative humidity of 65%);
- ⇒ Painting is possible after 24 hours; adhesion and compatibility must be checked;
- ⇒ Once opened containers should be fully used as soon as possible;
- ⇒ Clean tools with water after use.



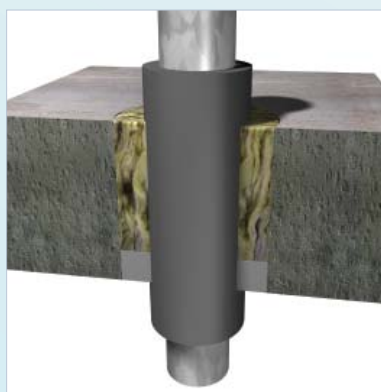


Intumex® MG - Installation Guidelines



Conditions for Application

- ⇒ Minimum +5°C, maximum +40°C for both substrate and ambient temperature;
- ⇒ Relative humidity of more than 65% will result in extended drying times;
- ⇒ Substrate must be free of oil, grease and dust;
- ⇒ Use water to dampen or water-deluted Intumex® MG and act as a primer for absorbant substrates.



Theoretical Consumption per 310ml Cartridge

Joint width	10mm	15mm	20mm	25mm	30mm	40mm	50mm
Joint depth							
10mm	3.1lfm	2.0lfm	1.5lfm	1.2lfm	1.0lfm	0.8lfm	0.6lfm
15mm	2.0lfm	1.3lfm	1.0lfm	0.8lfm	0.6lfm	0.5lfm	0.4lfm
20mm	1.5lfm	1.0lfm	0.7lfm	0.6lfm	0.5lfm	0.4lfm	0.3lfm

Installation: Wall and Floor Condition

- ⇒ Clean opening and if necessary penetrating services;
- ⇒ Mask out the working area on the wall/floor with tape;
- ⇒ Insert mineral wool tightly as backing material;
- ⇒ Apply correct thickness of sealant;
- ⇒ Smoothen the sealant surface before skin formation with water-moistened brush or spatula;
- ⇒ Remove tape;
- ⇒ Fix identification label.

For additional information on how and where to use this product, please refer to our systems database on the enclosed CD, or visit our website at <http://www.intumex.at>